

# Product Information 8 Parameter Control

## Product description

8 Parameter control is a whole blood control preparation, intended for use in Hemocytometry to monitor daily accuracy and precision of cell analyzers and manual analytical procedures.

## Ingredients

8 Parameter Control contains Human RBC, simulated WBC and mammalian platelets. All cells are suspended in a plasma like fluid. 8 Parameter Control is manufactured in such a way that it simulates whole blood. When used on automated cell analyzers, the following hemocytometric values may be obtained: tWBC, RBC, Platelets, MCV, MCH, MCHC, Hematocrit, RDW and all other values directly derived from those listed. No differential WBC analysis is included.

## Suitability

8 Parameter Control is multi suitable and may be used on all cell analyzers: Coulter, Sysmex\*, Abbott, Medonic, Swelab, Erma, Nihon Kohden, Danam/Drew, Mindray, Seac, Contraves, ABX, AL Systems, Bayer Advia 60. The Controls are supplied with Assay Value Sheets.

\* except NE series.

## Product Stability

8 Parameter Control is stable for 4 months. Opened vials remain stable for 4 weeks, when used in accordance with the instructions for use. Unopened vials may be stressed for 48 hours at 18° C maximum, without losing product integrity.

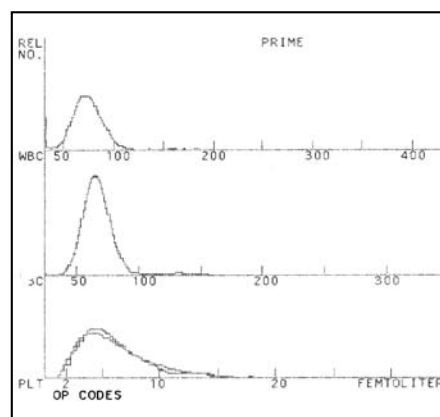
## Additional

Users of 8 Parameter control may participate in J.T.Baker's detailed between lab-between instrument quality assessment program, Rapid Stat.

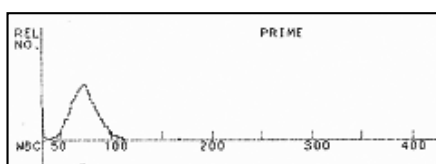
8 Parameter control comes in the following levels and values.

Parameter	Low	Normal	High
WBC x 10 <sup>9</sup> /l	2.0	10.3	20.0
RBC x 10 <sup>12</sup> /l	2.18	4.47	5.57
Hemoglobin g/dl.	6.1	13.5	17.9
Hct %	17.4	38.0	50.1
MCV fl	75	85	90
MCH pg	26.4	30.2	32.1
MCHC g/dl	35.2	35.5	35.7
Plts x 10 <sup>9</sup> /l	50	255	495
MPV fl	8.6	7.6	7.0
RDW %	14.6	14.0	13.8

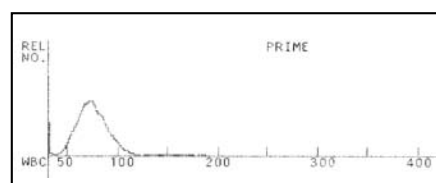
## Expected Histograms



Normal



Low, WBC only



High WBC only

## Availability

8 Parameter is available in the following pack sizes:

Volume per vial	Type of package	Product Nr.		
		Low	Normal	High
8 ml	Screw cap	3721	3722	3723
2.5 ml	Screw cap	3724	3725	3726
4.5 ml	Pierceable- screw cap ( vacutainer size)	3701	3702	3703
1 ml	Screw cap	3619	3620	3621

Pr. Nr.	content	3721	3722	3723	3724	3725	3726
3746	3 x 2.5 ml				1	1	1
3747	4 x 2.5 ml					4	
3748	4 x 8 ml		4				
3749	4 x 2.5 ml				4		
3751	6 x 2.5 ml				1	4	1

## Delivery schedule and ordering information

8 Parameter Control is manufactured and delivered on a 13 weeks schedule. Every 3rd week of the following calendar months: March, June, September, December. Orders are guaranteed when ordered in time, according the delivery schedule.